

EXCURSIONS



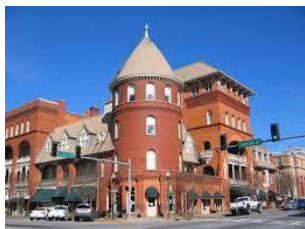
Thursday excursion: You will travel in climate-controlled, 1949 vintage train cars, from Georgia Veterans State Park, across Lake Blackshear to Plains, GA, on the SAM Shortline (Savannah, Americus and Montgomery), In Plains, you will



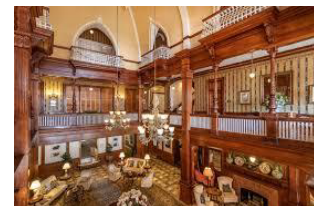
enjoy a 1-and-a-half-hour layover to explore the home of the 39th President, Jimmy Carter. Next, you will travel out to Archery, President

Carter's boyhood home, where you'll be able to explore his original house and farm. Following that stop, you will head back to Georgia Veterans State Park.

Friday Excursion: You will depart from the Convention Center via motor coach and travel to Willacoochee, GA where you will board the Azalea Sprinter. The excursion runs along the Historic Georgia and Florida Railroad between Nashville and Willacoochee, Georgia. In Nashville, GA you will detrain and enjoy a 1-hour layover. Lunch will be served on the train during the return trip to Willacoochee.



Americus Tour: The Saturday excursion will include a tour of the grand 1892 Windsor Hotel, a wine tasting at the Wolf Creek Tasting Room, and some free time to shop at the MAZE, an amazing antique store.



Sunday Excursion: On Sunday you will travel east on the SAM. You will be able to board the train at the Georgia Veterans State Park Station or at the Downtown Station in Cordele. You will then travel to Rochelle, GA where the train will layover to allow the engineer to relocate to the trailing engine, which will be in the lead back to Cordele and the State Park.

